

# CP-UNC-VC81L3-MDS

8MP WDR IR Network Vandal Dome Camera - 30Mtr.

- 1/2.8" 8Megapixel PS CMOS Image Sensor (0.9071 centimeters)
- Instastream/H.265/ Smart H.264+/H.264 triple-stream encoding
- Max. Outputs max. 8MP (3840 × 2160)@20fps (AI function enabled by default) and supports 8MP (3840 × 2160)@25/30fps (when AI function disabled)
- WDR(120dB), Day/Night (ICR), 3D-DNR, ROI, AWB, AGC, BLC, HLC
- IR Range of 30 Mtrs.
- 3.6mm lens (2.8mm Optional)
- Support Starlight Technology
- Support SMD Plus
- Support Micro SD Card, IP67, IK10, PoE
- Mobile Software: iCMOB, gCMOB
- CMS Software: KVMS Pro



## System Overview

Understanding the need of the hour in the security and surveillance industry, this series has been integrated with the starlight technology along with efficient and powerful deep-learning algorithms to make your life hugely easier. The numerous AI-based smart functions of this camera let you capture a face, protect the perimeter and even count people, greatly improving the accuracy of your video analysis. This camera also complies with international certification standards such as IP67 and IK10, as this camera is not just dust-proof and water-proof but also shock-proof and vandal-proof (which is given in selected models).

## Functions

### Starlight Technology

This camera is widely used to provide sharper and clearer picture quality with the help of its exceptional starlight sensitivity as the camera improves night vision in low light conditions. This technology is useful in conditions with extremely low light as the starlight technology turns almost completely dark images into those of clear colors.



## CP-UNC-VC81L3-MDS

8MP WDR IR Network Vandal Dome Camera - 30Mtr.

### Functions

#### Wide Dynamic Range (WDR)

When a scene is partly dark and partly bright, that is the dynamic range that distorts images due to this difference in the lighting. WDR technology provides you balanced lighting for a clear and vivid image throughout the day. WDR technology can be installed at entry/exit points of any building structure, jewellery shops, outdoor location among so many other places.

#### Smart Motion Detection (SMD Plus)

CPPLUS has introduced Smart Motion Detection, AI-based SMD, which use an advanced algorithm to differentiate human and vehicular shapes within a scene and send alarms only when a person or vehicle is detected.

#### Smart Analytical Support

Using an advanced algorithm, smart analytical technology lets you set a multitude of safety parameters and sends you alerts when any of those parameters have been compromised. Not just when there's an occurrence of tripwire or intrusion, but also in the cases of missing or abandoned objects.

#### OTA (Over the Air) Upgrade - Online Upgrade

OTA update is the online, wireless upgrade function to enable devices to download patches/new updates with a simple click to upgrade internet-connected devices with the latest version. This function helps users to upgrade devices from anywhere and saves the time of moving to the site physically for the upgrade, making the whole process easier for everyone involved.

#### Health Monitoring System (HMS)

The Health Monitoring System by CP PLUS provides a real-time health status of your surveillance devices as it enables instant reporting of live incidents and reduces system down-time since issues are detected and rectified at the onset and provides daily system support as well as live status web page view.

#### gCMOB/ iCMOB

Designed to allow users to access and control live streaming from CP PLUS IP Cameras, DVRs/ NVRs and Video Door Phones, the CP PLUS gCMOB/ iCMOB application offers a host of features such as Easy GUI, up to 16 live viewing split-ups; InstaOn cloud support; Playback; digital zoom ins; two-way talk, and more.

### About CP PLUS

The brand that is on its way to lead the world when it comes to the security and surveillance industry, CP PLUS, keeps bombarding the market with the most reliable range of products that have been designed carefully and methodically to automate the whole surveillance and security process, no matter how big your premises are.

It was the initiative to help the public in the area where they are the most vulnerable and to empower the sense of safety in our hearts that had conceptualized CP PLUS. And embarking on its mission to make the world a safer and more secure place has taken the brand's journey to unprecedented levels even when compared to international competitors.



# CP-UNC-VC81L3-MDS

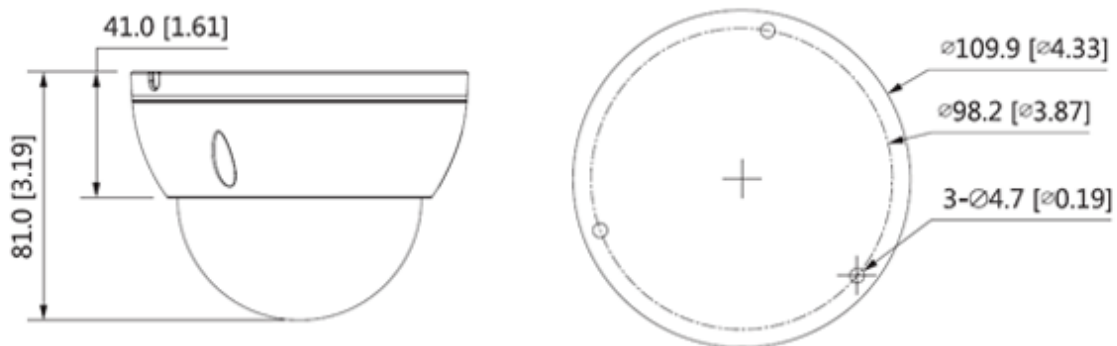
8MP WDR IR Network Vandal Dome Camera - 30Mtr.

| Feature                 | Specification  |
|-------------------------|--|
| Image Sensor            | 1/2.8" 8Megapixel progressive CMOS (0.9071 centimeters)  |
| Minimum Illumination    | 0.007 Lux@F1.4 (Color, 30IRE) 0.0007 Lux@F1.4 (B/W, 30IRE) 0 Lux (IR on)   |
| RAM/ROM                 | 512MB/128MB  |
| S/N Ratio               | >56dB  |
| Effective Pixels        | 3840 (H) × 2160 (V)  |
| Shutter Speed           | Auto/Manual, 1/3 s–1/100,000 s   |
| White Balance           | Auto/natural/street lamp/outdoor/manual/regional custom  |
| Lens                    | 3.6mm (2.8mm Optional)   |
| Lens Type               | Fixed-focal  |
| Mount Type              | M12  |
| Max. Aperture           | F1.4   |
| Iris Type               | Fixed  |
| Close Focus Distance    | 2.8 mm: 1.4 m (4.6 ft) ; 3.6 mm: 2.4 m (7.9 ft)  |
| DORI Distance           | 2.8mm– 85.5m (Detect) 34.2m (Observe) 17.1m (Recognize) 8.6m (Identify)<br>3.6mm– 110.3m (Detect) 44.1m (Observe) 22.1m (Recognize) 11.0m (Identify)   |
| Gain Control (AGC)      | Auto/Manual  |
| Back Light Compensation | BLC / HLC / WDR(120dB)   |
| Angle of View           | 3.6 mm: Horizontal 85° × Vertical 45° × Diagonal 100°<br>2.8 mm: Horizontal 108° × Vertical 58° × Diagonal 127°  |
| Video Compression       | Instastream, Smart H.264+, H.265, H.264, H.264B, H.264H, MJPEG (sub stream)  |
| Video Streaming         | Main stream: 3840 × 2160@(1–20fps by default) 3840 × 2160@(1–25/30fps when AI function disabled) sub stream: 704 × 576 @(1–25fps)/704 × 480@(1–30fps)<br>third stream: 1920 × 1080@(1–25/30fps)  |
| Resolution              | 8MP (3840 × 2160); 6MP (3072 × 2048); 5MP (3072 × 1728/2592 × 1944); 4MP (2688 × 1520);<br>3MP (2048 × 1536/2304 × 1296); 1080P (1920 × 1080); 1.3MP (1280 × 960);<br>720P (1280 × 720); D1(704 × 576/704 × 480); VGA (640 × 480); CIF (352 × 288/352 × 240) |

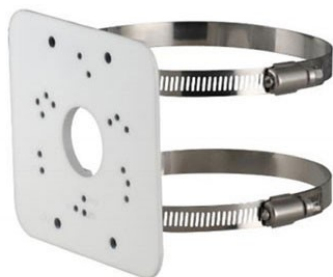
| Feature                              | Specification  |
|--------------------------------------|--|
| Privacy Mask                         | 4 areas  |
| ICR                                  | Auto (ICR)/Color/B/W   |
| ROI                                  | Yes (4 areas)  |
| Motion detection                     | Off/On (4 areas, Rectangular)  |
| Mirror                               | Yes  |
| Image Rotation                       | 0°/90°/180°/270° (Support 90°/270° with 1080P resolution and lower.)   |
| Perimeter Protection                 | Tripwire; intrusion (support the classification and accurate detection of vehicle and human).  |
| Bit Rate Control                     | CBR/VBR  |
| Alarm Event                          | No SD card; SD card full; SD card error; service life warning (only supported by CP Plus card); network disconnection; IP conflict; illegal access; motion detection; video tampering; intrusion; tripwire; scene changing; voltage detection; SMD; Security exception |
| Bit Rate                             | H.264: 3 kbps–8192 kbps ; H.265: 3 kbps–8192 kbps  |
| Scene Self-adaptation (SSA)          | Yes  |
| OTA (Online Device Upgrade)          | Support  |
| Cloud Health Monitoring System (HMS) | Support  |
| Intelligent Search                   | Work together with Smart NVR to perform refine intelligent search, event extraction and merging to event videos.   |
| Protocol                             | IPv4; IPv6; HTTP; TCP; UDP; ARP; RTP; RTSP; RTCP; RTMP; SMTP; FTP; SFTP; DHCP; DNS; DDNS; QoS; UPnP; NTP; Multicast; ICMP; IGMP; NFS; SAMBA; PPPoE; SNMP; ONVIF (Profile S/Profile G/Profile T); CGI; InstaOn Cloud; Milestone; Genetec                                |
| SDK and API                          | Yes  |
| Cyber Security                       | Video encryption; firmware encryption; configuration encryption; Digest; WSSE; account lock-out; security logs; IP/MAC filtering; generation and importing of X.509 certification; syslog; HTTPS; 802.1x; trusted boot; trusted execution; trusted upgrade             |
| Ethernet                             | RJ-45 (10/100Base-T)   |
| User/Host                            | 20 (Total bandwidth: 72M.)   |
| IR                                   | IR Range of 30 Mtr., Smart IR  |

| Feature               | Specification  |
|-----------------------|--|
| No of IR LEDs         | 3  |
| Browser               | IE: IE8; IE9; IE11, Chrome, Firefox  |
| Smart Phone           | iPhone, iPad, Android Phone  |
| Micro SD              | FTP; Micro SD card (256GB); NAS; SFTP  |
| Operating Temperature | -40°C to +55°C (-40°F to +131°F)/Less than 95% RH  |
| Storage Temperature   | -40° C to +60° C (-40° F to +140° F)   |
| Power Source          | 12V DC/PoE (802.3af)   |
| Power Consumption     | Basic power consumption: 2.7W (12V DC); 3.6W (PoE)<br>Max. power consumption (WDR + H.265 + IR LED intensity): 6W (12V DC); 7W (PoE) |
| Weatherproof Standard | IP67, IK10   |
| Dimension             | 81 mm × Φ109.9 mm (3.2" × Φ4.3")   |
| Casing                | Metal  |
| Weight                | 378g   |

Dimensions (mm/inch)



Accessories : Optional



CP-UA-B2P  
Pole Mount