



Quick Start Guide

Hardware Installation CP-VTA-T2324

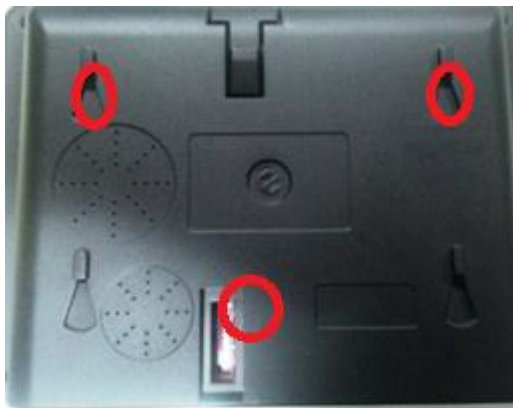
Version 1.01

Quick guide for Hardware Installation.

Step:-1. How to install hardware.

Step:-1.1 >

We have to drill three screws of same size on the back side of the device.



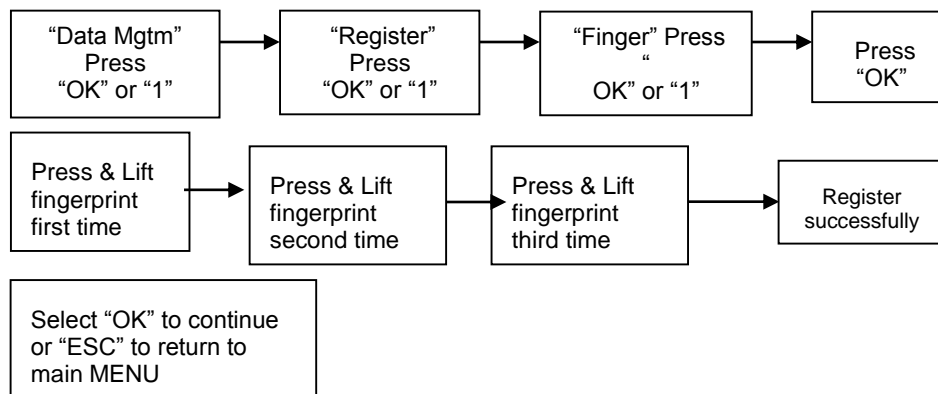
Step:-2 Accessories for connectivity.



1. Mini “USB” cable.

Step:-3 How to enroll fingerprints

Press “**Menu**” button and follow below Process.



Note:-If you want to go with further operation then you can go with manual enclosed with the device.



Website: - www.cpplusworld.com

Email id: - sales@cpplusworld.com; support@cpplusworld.com
