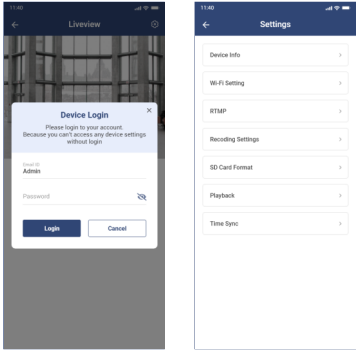


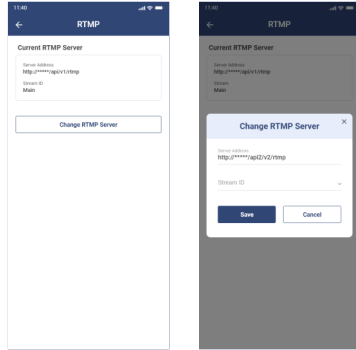
Settings

Various setting can be done, prior to change any configuration you must login with valid username and password by default username and password are admin and 123456 respectively.



RTMP Settings

Navigate to RTMP from settings menu, it will show you the current configured server details. To modify click on "Change RTMP Server" and input the required details and save the setting.



Frequently Asked Questions

- 1. Can I share camera with family and friends?**
Yes, you can share your cameras with family and friends who will have access to view the camera.
- 2. What's the Wireless Range?**
The range of your home Wi-Fi is heavily dependent on your home router and the conditions of the room. Check with your router specifications for exact range data.
- 3. The camera appears offline or unreachable?**
Make sure you entered the correct Wi-Fi password during the Wi-Fi setup. Check whether there is any Internet connection problem. If the Wi-Fi signal is too weak, reset your Wi-Fi router and try again.
- 4. Cannot connect to your Wi-Fi network.**
Make sure you entered the correct Wi-Fi password during the Wi-Fi setup. Check whether there are any Internet connection problems. If the Wi-Fi signal is too weak, reset your Wi-Fi router and try again.
- 5. How many cameras can I control?**
CP Plus app can control unlimited number of cameras in unlimited amount of locations. Your router may have a limit of how many cameras can be connected to one router.

System Requirements

- Smartphone running iOS® 9.0 or higher or Android™ 8.0 or higher
- Existing Wi-Fi Network with internet connection

Technical Specifications

- Camera: up to 3MP at 20frames / sec. H.265 encoding
- Viewing Angle: 80°
- Audio: Internal Speaker and Microphone
- Storage: supports up to 128GB Micro SD card (not included)
- Wi-Fi: IEEE 802.11b/g/n, 2.4GHz (not compatible with 5GHz Wi-Fi networks)



Quick Operation Guide MV31A

Thank you for choosing CP Plus camera. Get started using your new devices by downloading ezykam+ app, one convenient app that manages everything straight from your smart phone. Easily connect to your home Wi-Fi and control multiple devices from the touch of your fingertips

Mobile Application Operations

Scan below QR code to **download** the Mobile application for android.



Reset Camera

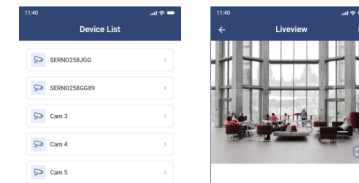
• Use the reset pin to press the Reset Button for several seconds until the camera starts to beep.

• **Optional:** Insert Micro SD card



Device List and Live View

Connect your mobile phone with above mentioned SSID, run the application, it will discover all the available devices in the network. Select any device to get live preview.

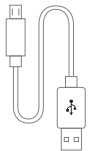


Thank you for choosing CPPlus ezykam.

What's in the Box



ezykam Wi-Fi Camera



USB Cable



Power Adapter



Quick Operation Guide

Quick Configuration

- Setup router SSID and key as **PANIND** and **12AB89YZ** respectively.
- Power **ON** the camera, it will get connected to above SSID automatically.

Note: Make sure you're connecting to a 2.4GHz Wi-Fi network

For further assistance, you can reach us via ezycare@cpplusworld.com

**** Please read the instruction carefully before using the product ****